

# CENTRAL GARDENS

BEING A PORTION OF SECTIONS 35 AND 36, TOWNSHIP 41 SOUTH,  
RANGE 42 EAST, CITY OF PALM BEACH GARDENS,  
PALM BEACH COUNTY, FLORIDA.

MARCH 2012

195

State of Florida }  
County of Palm Beach } SS

THIS PLAT WAS FILED FOR  
RECORD AT \_\_\_\_\_ M.

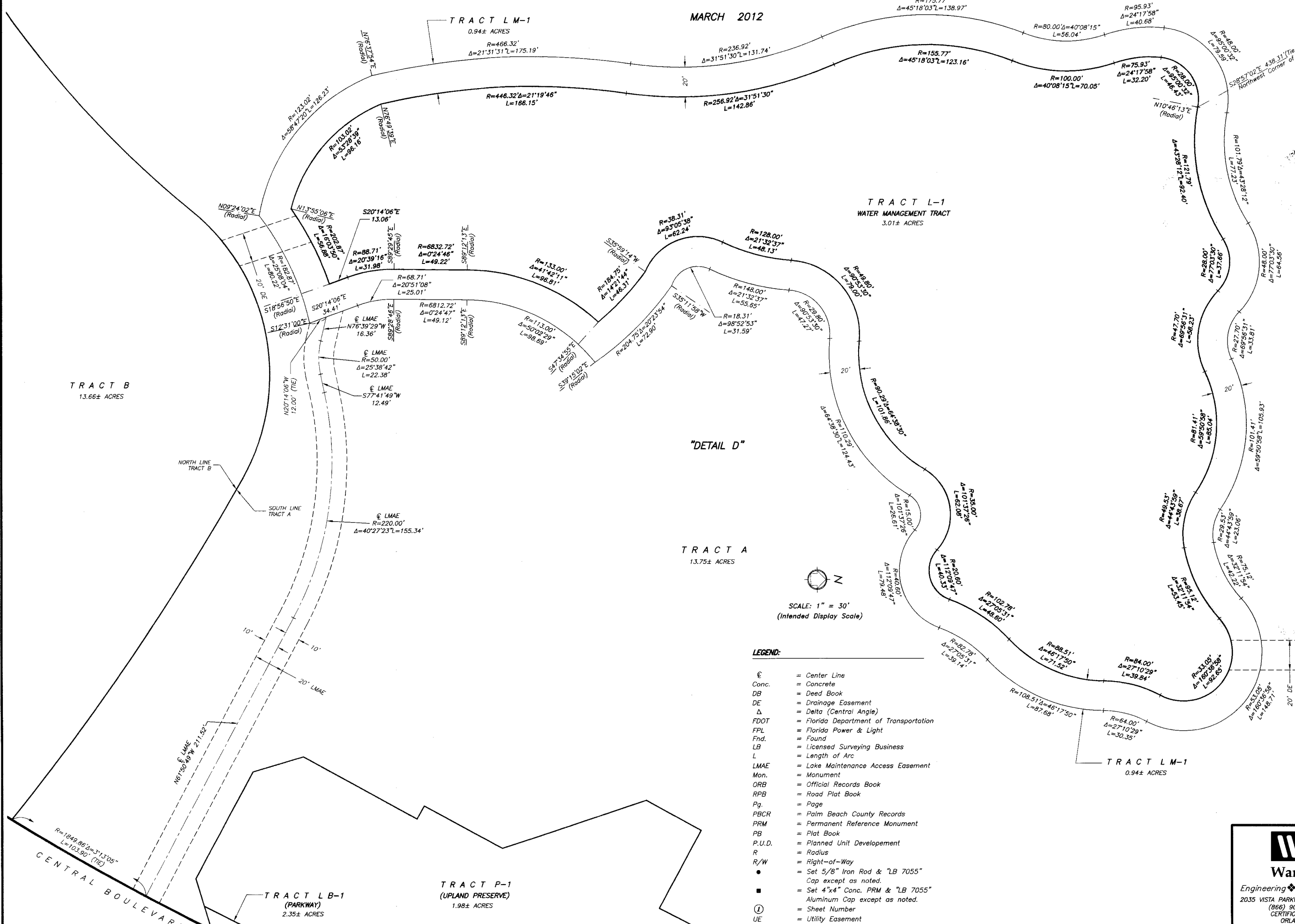
THIS \_\_\_\_\_ DAY OF \_\_\_\_\_  
A.D. 2012 AND DULY RECORDED.

IN PLAT BOOK \_\_\_\_\_ ON  
PAGES \_\_\_\_\_ THROUGH \_\_\_\_\_

SHARON R. BOCK  
CLERK AND COMPTROLLER

BY: \_\_\_\_\_  
DEPUTY CLERK

SHEET 6 OF 6 SHEETS



- LEGEND:**
- ⊙ = Center Line
  - ▬ = Concrete
  - DB = Deed Book
  - DE = Drainage Easement
  - Δ = Delta (Central Angle)
  - FDOT = Florida Department of Transportation
  - FPL = Florida Power & Light
  - Fnd. = Found
  - LB = Licensed Surveying Business
  - L = Length of Arc
  - LMAE = Lake Maintenance Access Easement
  - Mon. = Monument
  - ORB = Official Records Book
  - RPB = Road Plat Book
  - Pg. = Page
  - PBCR = Palm Beach County Records
  - PRM = Permanent Reference Monument
  - PB = Plat Book
  - P.U.D. = Planned Unit Development
  - R = Radius
  - R/W = Right-of-Way
  - = Set 5/8" Iron Rod & "LB 7055" Cap except as noted.
  - = Set 4"x4" Conc. PRM & "LB 7055" Aluminum Cap except as noted.
  - ① = Sheet Number
  - UE = Utility Easement
  - WSE = Water and Sewer Easement

**WGI**  
Wantman Group, Inc.

Engineering ♦ Planning ♦ Surveying ♦ Environmental  
2035 VISTA PARKWAY, SUITE 100, WEST PALM BEACH, FL 33411  
(866) 909-2220 phone (561) 687-1110 fax  
CERTIFICATE OF AUTHORIZATION No. LB 7055  
ORLANDO - PORT ST. LUCIE - TAMPA  
THIS INSTRUMENT WAS PREPARED BY DEREK G. ZEMAN, P.S.M.  
PROFESSIONAL SURVEYOR AND MAPPER, LICENSE NO. 5655  
FOR THE FIRM: WANTMAN GROUP, INC.